



NAVIGATING NEW MOBILITY

AUGUST 7, 2019 WORKSHOP — GRESHAM, OR

Becky Steckler, AICP
Urbanism Next Center Program Director
beckys@uoregon.edu

Rebecca Lewis, PhD
SCI Research Director, Asst. Professor
rlewis9@uoregon.edu

Nico Larco, AIA
Urbanism Next Center Director
nlarco@uoregon.edu

Marsie Surguine
Urbanism Next Center GE
marsies@uoregon.edu

Megan Banks
SCYP Program Manager
mbanks@uoregon.edu



UNIVERSITY OF
OREGON

SCI
Sustainable Cities Institute
University of Oregon

URBANISM NEXT

- Navigating New Mobility Final Draft Report (July 2019)
- Final Report (Aug 2019)



NEW MOBILITY POLICY TOPICS

1. Safety
2. Social equity
3. Active transportation
4. Congestion and vehicle miles traveled
5. Sustainability and environmental impacts
6. Design and management of the right-of-way
7. Land use and metropolitan footprint
8. Informed decision making
9. Managed innovation
10. Fiscal impacts and new mobility revenue

SCYP CLASSES

- Fall 2018: Budgeting Class (Lewis)
- Fall 2018: Industrial Ecology/Eugene (Skov)
- Winter 2019: Growth Management (Lewis)
- Winter 2019: Transportation (Brown)
- Winter/Spring 2019: Public Administration Capstone Class (Clark)
- Spring 2019: Introduction to AV Policy (Clark)
- Spring 2019: Advanced Design Studio/Gresham (Ribe)
- Spring 2019: Land Use Policy/Eugene (Yang)

PUTTING IT ALL TOGETHER

Bias for known
transportation
modes



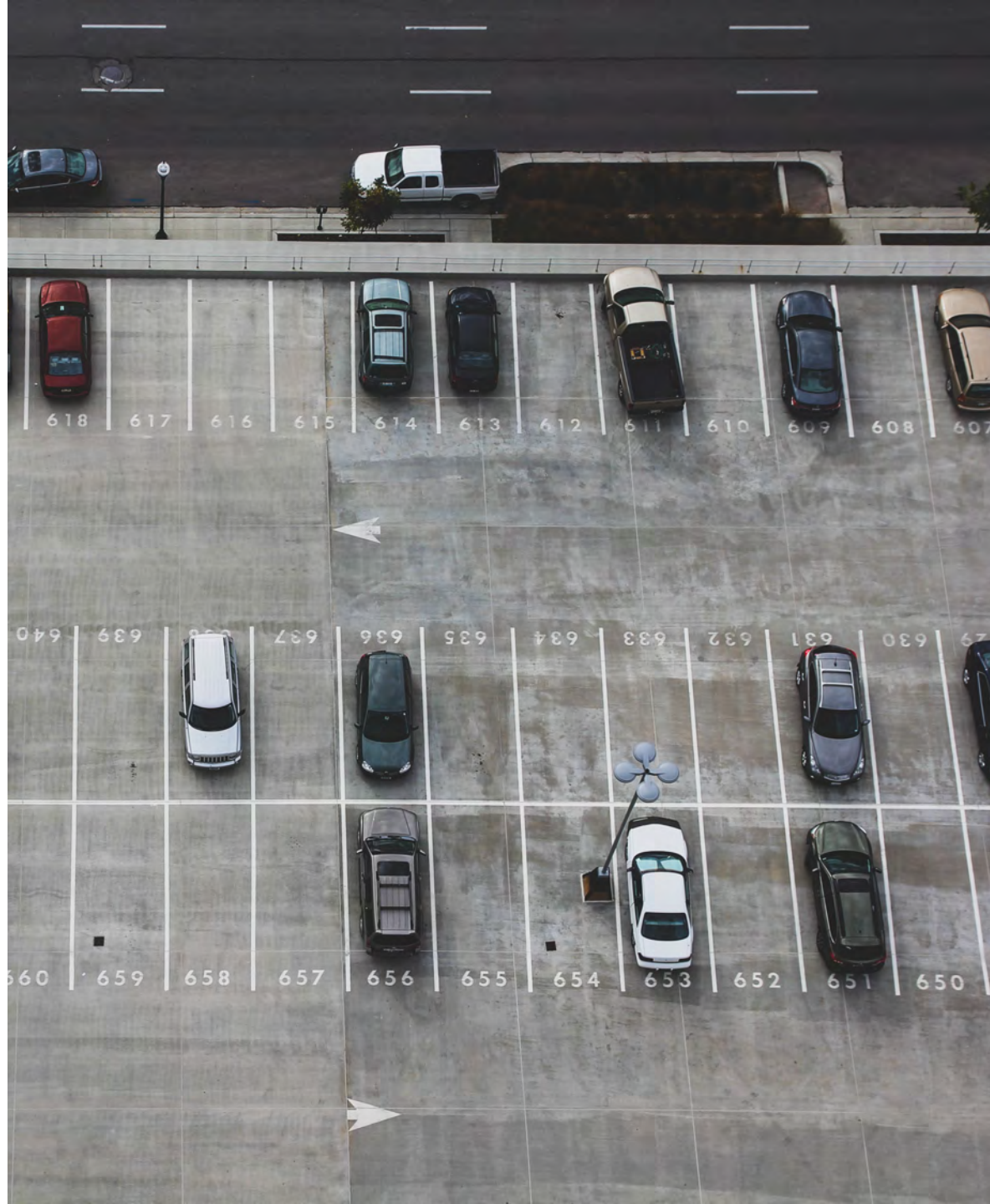
PUTTING IT ALL TOGETHER

Who can afford
new mobility?



PUTTING IT ALL TOGETHER

Prepare for land use changes related to parking...



PUTTING IT ALL TOGETHER

Prepare for land
use changes
related to
parking...
delivery...



PUTTING IT ALL TOGETHER

Prepare for land use changes related to parking... delivery... lockers...



PUTTING IT ALL TOGETHER

Prepare for land use changes related to parking...
delivery...
lockers...
and warehousing



PUTTING IT ALL TOGETHER

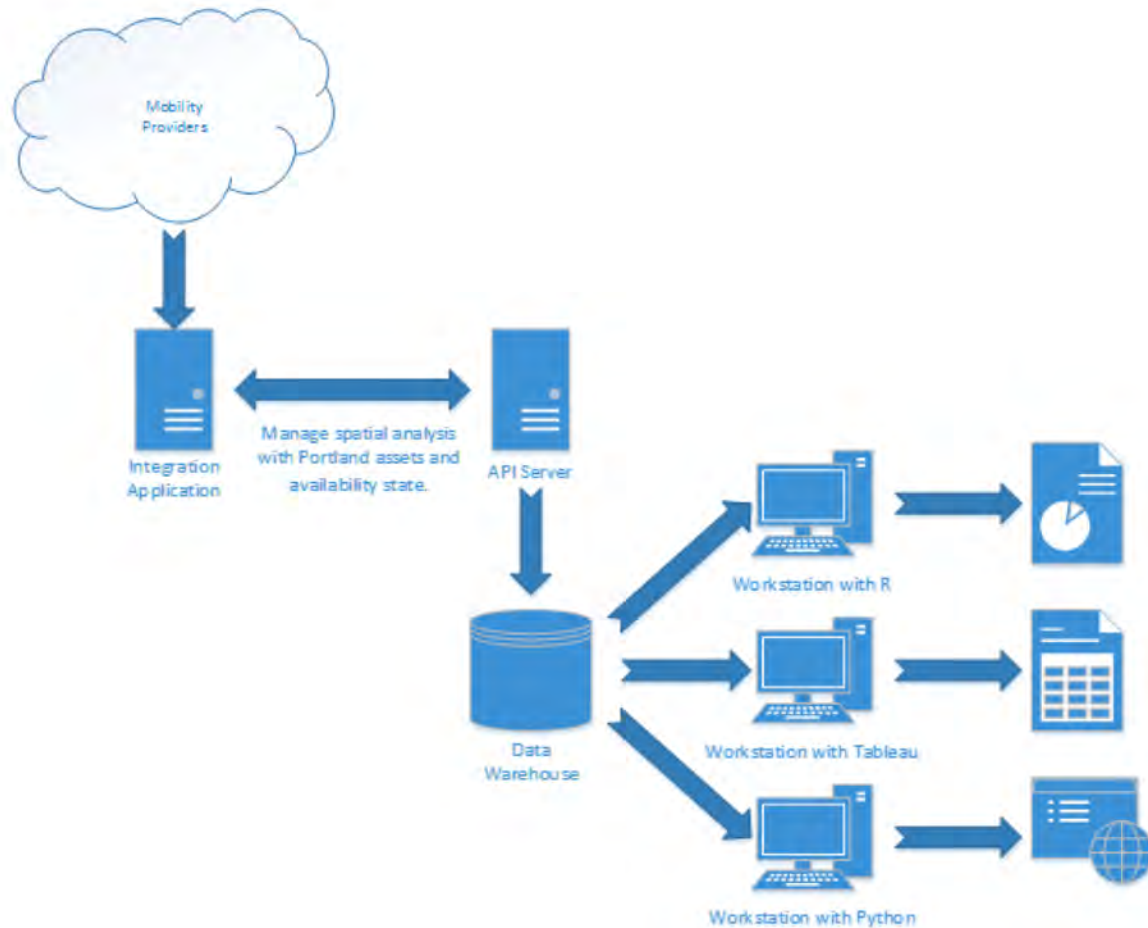
E-scooters are increasing pressure to build more protected bike lanes



PUTTING IT ALL TOGETHER

Increase capacity to create data strategy, analyze data, and protect data

Oregon AV Task Force considering “right to be forgotten” geocoded data

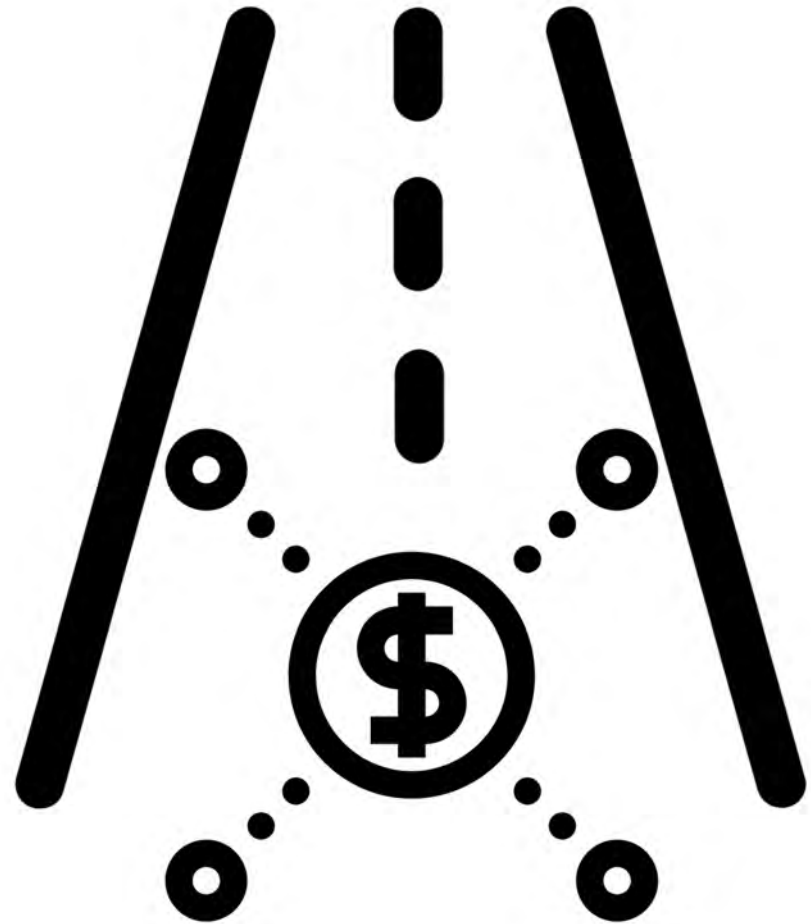


PUTTING IT ALL TOGETHER

Set the right fee to
work with new
mobility services

Work with
state/region on
RUC/VMT fee

Price to manage
demand
(congestion, curb,
events)



GETTING THE POLICIES RIGHT

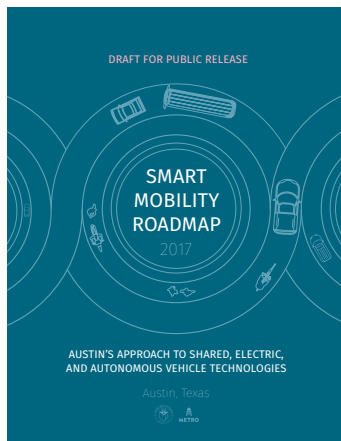
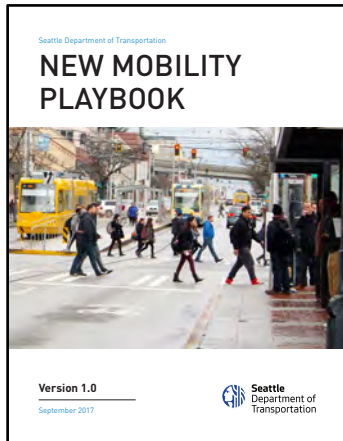
*Porter and Kramer,
Creating Shared
Values (2011)*

- Set clear and measurable societal goals
- Set prices for resources that reflect true cost
- Set performance standards (outcomes) and don't prescribe how to achieve them
- Define phase-in periods for achieving standards (steps towards goals --- and this should match the business economics/models)
- Have universal measurement and performance-reporting systems (clear, measurable outcomes)
- Efficient and timely reporting of results

WHAT TO DO NEXT: IMPLEMENTING POLICIES

Performance standards

What are the outcomes that Gresham and Eugene need from new mobility services?



WHAT TO DO NEXT: IMPLEMENTING POLICIES

Plan for the Right-of-Way

Cities control the right-of-way. Plan for its use and prioritize what is important.



**WHAT TO DO
NEXT:
IMPLEMENTING
POLICIES**

Data

What does Gresham and Eugene need to understand behavior, impacts, conflicts, enforcement, and collect fees? How will Gresham and Eugene analyze the data? How will Gresham and Eugene protect the data?

GETTING THE POLICIES RIGHT

Process

Pilot Projects v. Deployment

RFI: For Pilots

RFP: For Deployment

Operating/business license

GETTING THE POLICIES RIGHT

Short-term
activities

Long-term
activities

