



OTREC Research Forum

PSRC and the Central Puget Sound Region

September 8, 2010

What We Do

- Puget Sound Regional Council (PSRC):
MPO, COG
- Regional Growth, Economic
and Transportation Planning
- Federal transportation
funds to priority projects
- Regional data and forecasts
- Forum for regional issues
- Prosperity Partnership

OVERVIEW

GROWTH
MANAGEMENT

TRANSPORTATION

ECONOMIC
DEVELOPMENT

PROSPERITY
PARTNERSHIP

Who We Represent

OVERVIEW

GROWTH
MANAGEMENT

TRANSPORTATION

ECONOMIC
DEVELOPMENT

PROSPERITY
PARTNERSHIP

Our Region

- 4 Counties
- 82 Cities and Towns
- Urban & Rural



Our Members

- Cities, Counties, Ports and Transit
- State Agencies and Tribal Governments



Regional Profile

OVERVIEW

GROWTH
MANAGEMENT

TRANSPORTATION

ECONOMIC
DEVELOPMENT

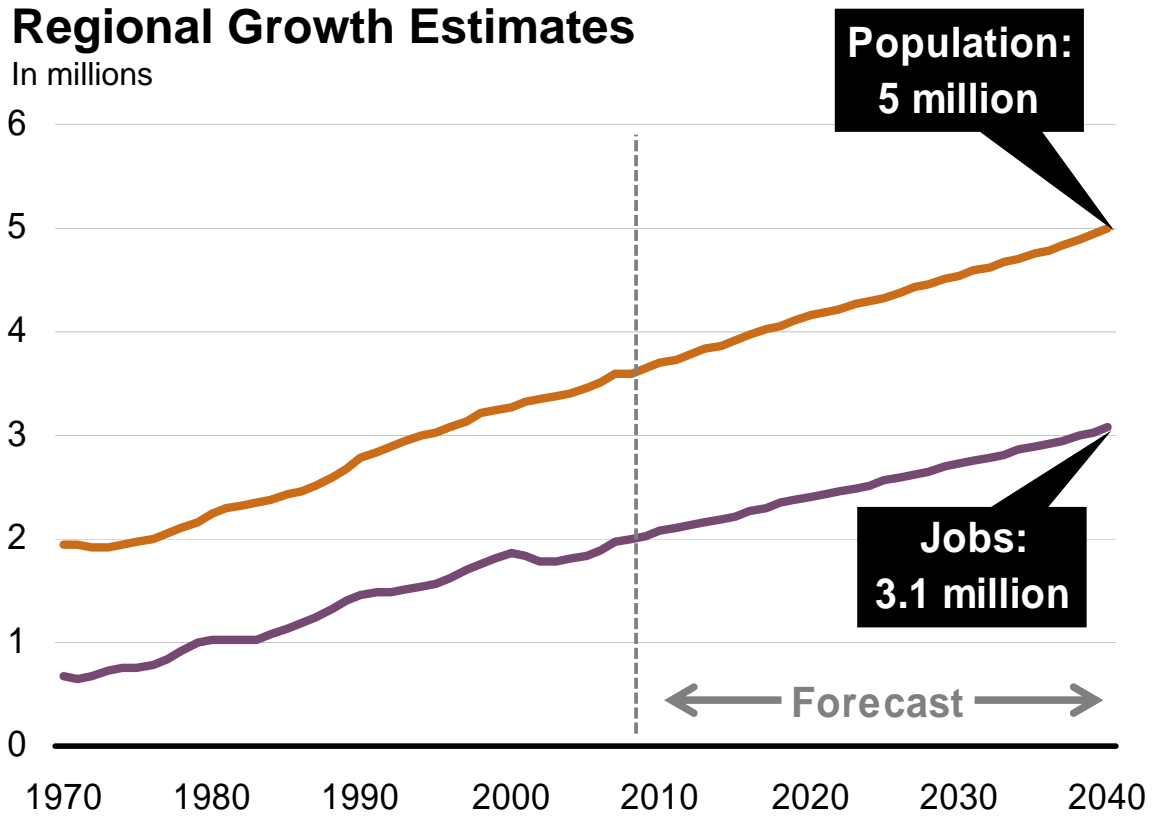
PROSPERITY
PARTNERSHIP

Our Region

- 6,300 mi²
- 16% urban
- Population (2010)
3,707,400
- Jobs (2009)
1,926,400



Our Region is Growing



By 2040, region forecast to increase 36% in population, 51% in jobs

PSRC Governance Structure



OVERVIEW

GROWTH MANAGEMENT

TRANSPORTATION

ECONOMIC DEVELOPMENT



- **Formed by Interlocal Agreement**
- **MPO Designation by Governor**
- **Board Representatives Appointed by Members**

General Assembly

Votes on major regional decisions, approves budget, elects new officers

Executive Board

Carries out delegated powers and responsibilities between meetings of the Executive Board

Transportation Policy Board

Makes recommendations on key transportation issues

Growth Management Policy Board

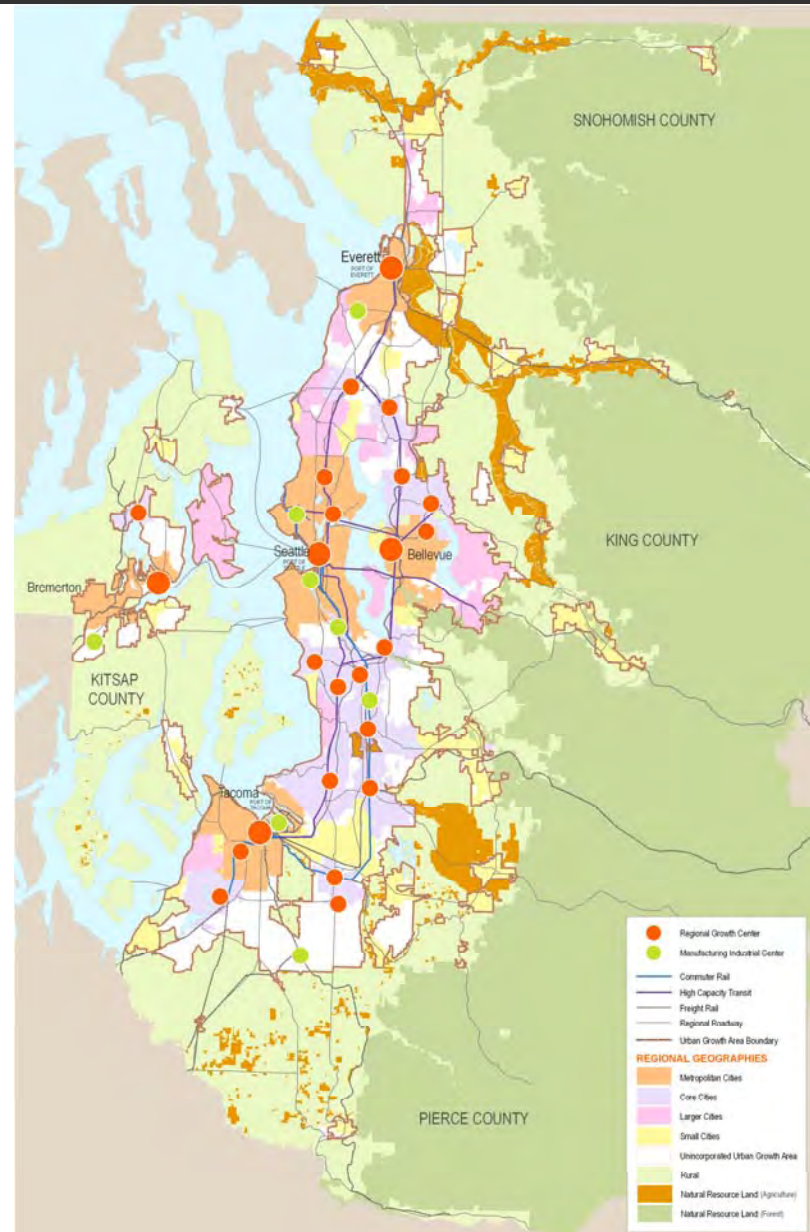
Makes recommendations on key growth management issues

Economic Development District Board

Regional economic development planning and collaboration with private and public sector agencies

VISION 2040 – MPPs & Growth Strategy

- Regional growth, environmental, economic and transportation policies
- Guides regional plans, local comprehensive plans
- Defined UGA, compact communities and centers
- Minimize incompatible rural development
- More transportation choices, decreased reliance on SOV
- Sustainable, healthy environment
- Social equity



OVERVIEW

GROWTH
MANAGEMENT

TRANSPORTATION

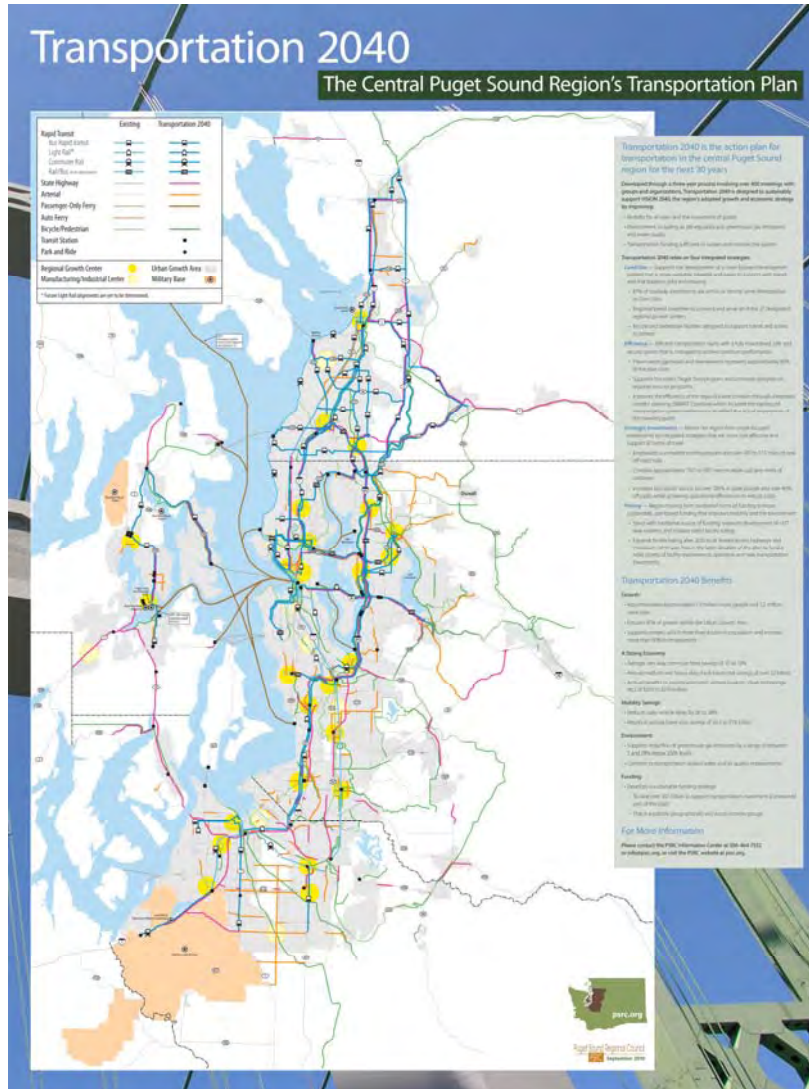
ECONOMIC
DEVELOPMENT

Transportation 2040

OVERVIEW

GROWTH
MANAGEMENT

TRANSPORTATION

ECONOMIC
DEVELOPMENT

Implement VISION 2040

- Regional Growth Strategy

- Centers

Environment

- 4-Part Climate Change Strategy

- Puget Sound water quality

Mobility

- Regional economic vitality

- Mobility for people and goods movement

Sustainable Funding

- New sources of revenue

- Reliable, predictable, sufficient

Regional Economic Strategy

Prosperity
PARTNERSHIP

OVERVIEW

GROWTH
MANAGEMENT

TRANSPORTATION

ECONOMIC
DEVELOPMENT



Economic Foundations

- Technology Commercialization
- New & Small Business Support
- Education
- Tax Structure
- Transportation
- Social Capital

Industry Clusters

- Aerospace
- Clean Technology
- Information Technology
- Life Sciences
- Logistics & International Trade
- Military
- Tourism/ Visitors



For More Information

Ben Bakkenta, Principal Planner

bbakkenta@psrc.org (206) 971-3286

PSRC Information Center

info@psrc.org (206) 464-7532